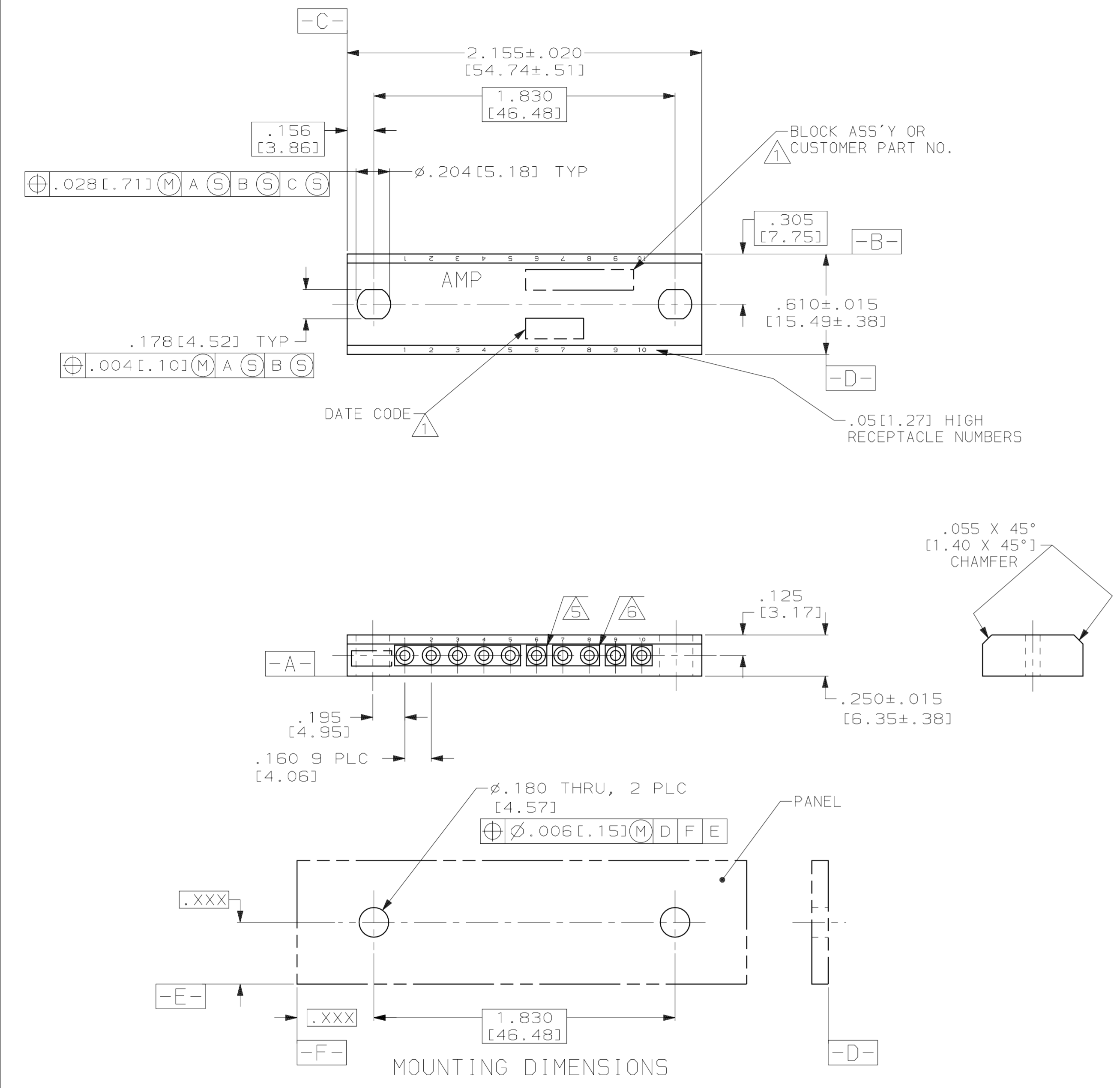
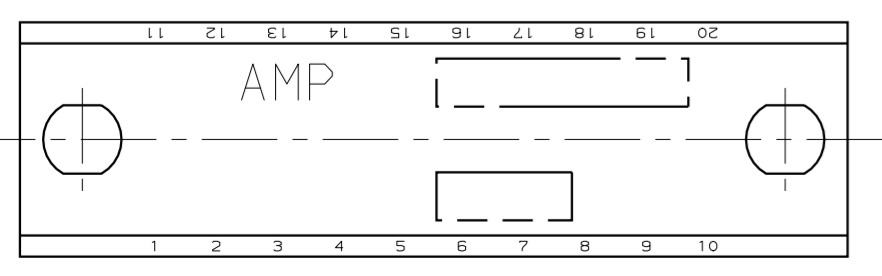


LOC		DIST		P		F		ZONE		LTR		REVISIONS				
DF	NO											DESCRIPTION	DATE	APPD		
												BW	REV PER 0600-1695-94	TT	03-94	AMS
												BY	REV PER 0600-4527-95	TT	10-95	AMS



- 1** AMP BLOCK ASSEMBLY PART NUMBER, "AMP", & DATE CODE ARE STAMPED ON FRONT FACE UNLESS OTHERWISE SPECIFIED IN TABLE.
- A. IF STAMPING OF A CUSTOMER PART NUMBER IS SPECIFIED IN TABLE AMP BLOCK ASSEMBLY PART NUMBER IS OMITTED.
- B. ALL CHARACTERS ARE 13 ± .02 [3.30 ± .51] HIGH UNLESS OTHERWISE SPECIFIED.
- C. COLOR OF ALL STAMPED CHARACTERS TO BE BLACK ON NATURAL & YELLOW COLORED BLOCKS, WHITE ON ALL OTHER COLORED BLOCKS.
- 5** RECESSES TO BE .12 ± .02 [3.04 ± .51] ROUND OR SQUARE AROUND SINGLE INSERTS.
- 6** RECESSES TO BE .12 ± .02 [3.04 ± .51] WIDE AND ELONGATED FOR GROUPS OF COMMON INSERTS.
- 7** NUMBERS 1 THRU 10 ON ϕ OF RECEPTACLES TO BE 16 THRU 20 ON ϕ OF EACH PAIR OF RECEPTACLES.
- 8** RECEPTACLE NUMBERS 1 THRU 10 TO BE 1 THRU 20 AS SHOWN:
- 9** NUMBERS 1 THRU 10 ON ϕ OF RECEPTACLES TO BE 1 THRU 5 ON ϕ OF EACH PAIR OF RECEPTACLES.
- 10** NUMBERS 1 THRU 10 ON ϕ OF RECEPTACLES TO BE 6 THRU 10 ON ϕ OF EACH PAIR OF RECEPTACLES.
- 11** NUMBERS 1 THRU 10 ON ϕ OF RECEPTACLES TO BE 11 THRU 15 ON ϕ OF EACH PAIR OF RECEPTACLES.



STAMPING	ARRANGEMENT	INSERTS	PLATING	COLOR	PART NO	
1				GOLD	NATURAL	583571-2
1				GOLD	NATURAL	3-582408-9
1				GOLD	RED	3-582408-2
1				TIN	NATURAL	1-582305-9
1				GOLD	NATURAL	3-582138-9
1				GOLD	NATURAL	582009-9
1				TIN	NATURAL	581952-9
1				GOLD	NATURAL	581950-9
1				GOLD	GRAY	581950-8
1				GOLD	VIOLET	581950-7
1				GOLD	BLUE	581950-6
1				GOLD	ORANGE	581950-3
1				GOLD	RED	581950-2
1				TIN	NATURAL	581948-9
1				GOLD	BLACK	581424-8
1				GOLD	GREEN	581424-5
1				GOLD	YELLOW	581424-4
1				GOLD	RED	581424-2
1				GOLD	NATURAL	581424-0
1				GOLD	BLACK	581358-9
1 & CUST NO 1942441-6				GOLD	GRAY	4-480112-1
1				GOLD	NATURAL	480112-9
1				GOLD	GRAY	480112-8
1				GOLD	GREEN	480112-5
1				GOLD	RED	480112-2
1				GOLD	BLACK	480112-0
1				TIN	NATURAL	1-480064-0
1				TIN	NATURAL	480064-9
1				TIN	NATURAL	480064-8
1				TIN	NATURAL	480064-7
1				GOLD	NATURAL	480064-6
1				TIN	NATURAL	480064-4
1				GOLD	NATURAL	480064-3
1				TIN	NATURAL	480064-1

THIS DRAWING IS A CONTROLLED DOCUMENT FOR AMP INCORPORATED. IT IS SUBJECT TO CHANGE AND THE CONTROLLING ENGINEERING ORGANIZATION SHOULD BE CONTACTED FOR THE LATEST REVISION.

DO NOT SCALE PRINT. UNLESS SPECIFIED DIMENSIONS IN INCHES [mm]	DR T. THOMPSON 4-29-94	AMP Incorporated Harrisburg, PA 17105-3608
TOLERANCES ON: 2 PLC DEC ± .02 [.50] 3 PLC DEC ± .010 [.25] ANGLES ± -	CHK 04-06-94 A. SHARPE APPD 04-06-94 A. SHARPE APPD 04-06-94 A. SHARPE	
MATERIAL BLOCK - NYLON INSERT - BRASS	PRODUCT SPEC 108-7053 108-7054	NAME CONNECTOR BLOCK ASSEMBLY, TAPER, 53 SERIES, 10 CAVITY
FINISH SEE TABLE	APPLICATION SPEC -	SIZE D
WEIGHT APPROX. 8 GRAMS	SCALE 2:1	CAGE CODE 00779 DRAWING NO C=480064 SHEET 1 OF 1