

# DATA SHEET

WIRELESS COMPONENTS

Ceramic Chip Antenna

ANT5320LL24R2455A

2.4 AND 5 GHZ

5320 Series



FEATURES

- Compact size
- Omni-directional radiation
- Dual-band design
- Tape & reel automatic mounting
- Reflow process compatible
- RoHS compliant

APPLICATIONS

- 2.4 & 5 GHz WiFi device
- ISM band equipment

ORDERING INFORMATION

All part numbers are identified by the series, packing type, material, size, antenna type, working frequency and packing quantity.

**PART NUMBER**

**ANT 5320 L L24 R 2455A**  
 (1) (2) (3) (4) (5) (6)

---

**(1) PRODUCT**

ANT = Antenna

---

**(2) SIZE**

5320 = 5.3 × 2.0

---

**(3) ANTENNA TYPE**

L,F,A = Chip Antenna

---

**(4) SERIAL NO.**

L24

---

**(5) PACKING STYLE**

R = Tape and Reel

---

**(6) WORKING FREQUENCY**

2455 = 2.45/ 5 GHz

---

**PHYCOMP CTC**

CAN431175324252K

---

**I2NC**

431175324252

---

**SPECIFICATION**

Table 1

DESCRIPTION	VALUE
Centre Frequency	2.45/ 5 GHz
Bandwidth	120M / 900 MHz (min)
Return Loss	10 dB min
Polarization	Linear
Azimuth Beamwidth	Omni-directional
Peak Gain	2.17 / 3.51 dBi ( Typ. )
Impedance	50 Ω
Operating Temperature	-40~105 degree
Maximum Power	1 W
Termination	Ag (Environmentally-Friendly Leadless)
Resistance to Soldering Heats	260°C , 10sec.

**NOTE**

1. The specification is defined on Yageo evaluation board

**DIMENSIONS**

Table 2 Machinical Dimension

	DIMENSION
L (mm)	5.30 ± 0.10
W (mm)	2.00 ± 0.10
T (mm)	1.15 ± 0.10
A (mm)	0.80 ± 0.10
B (mm)	0.80 ± 0.10
C (mm)	0.50 ± 0.10
D (mm)	2.40 ± 0.10

**OUTLINES**

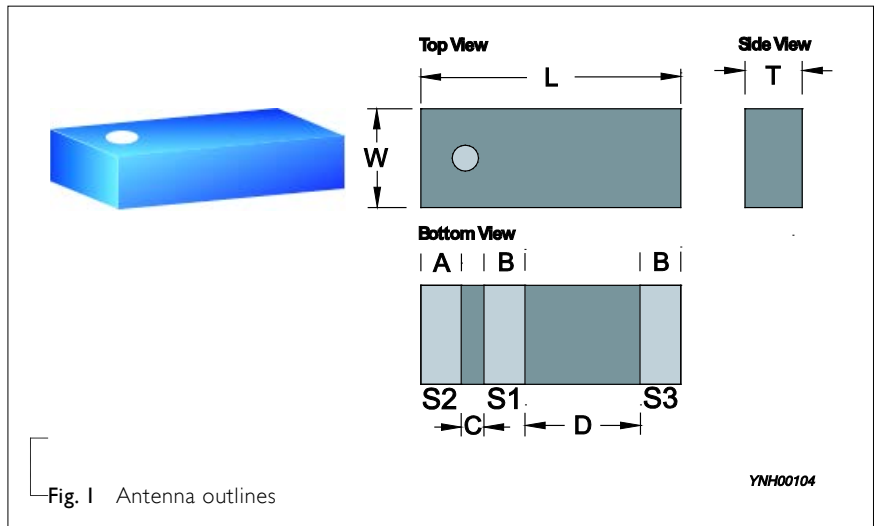


Table 3 Termination configuration

TERMINAL NAME	FUNCTION
S1	Feeding Point
S2	Soldering Point
S3	GND

REFERENCE DESIGN OF EVALUATION BOARD

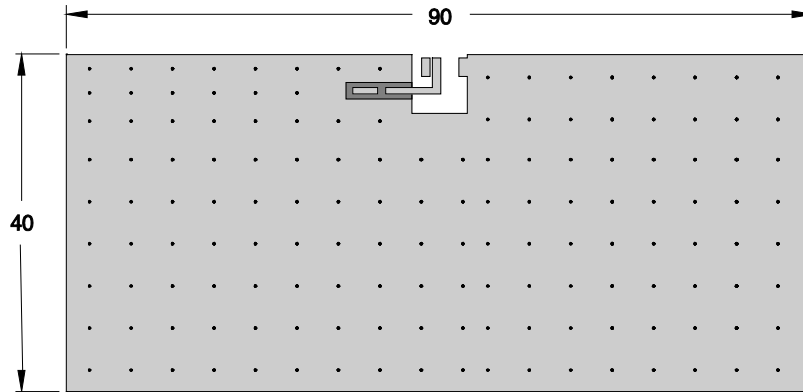
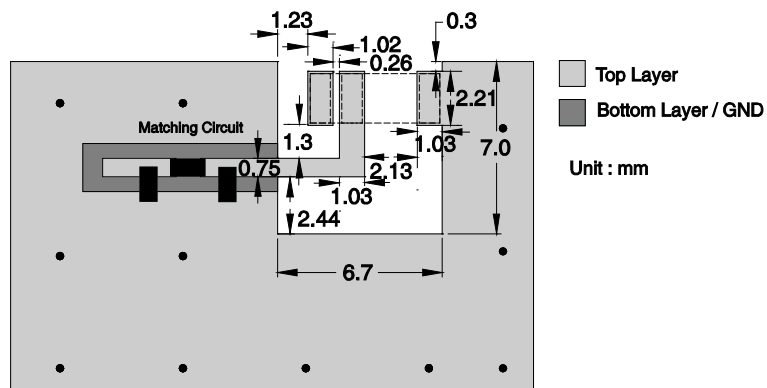


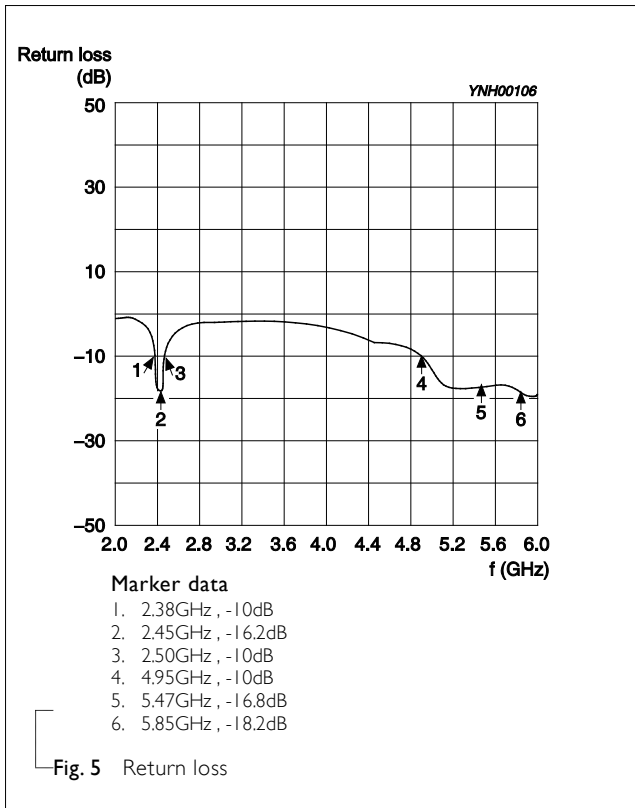
Fig. 3 Outlook and dimension of evaluation board

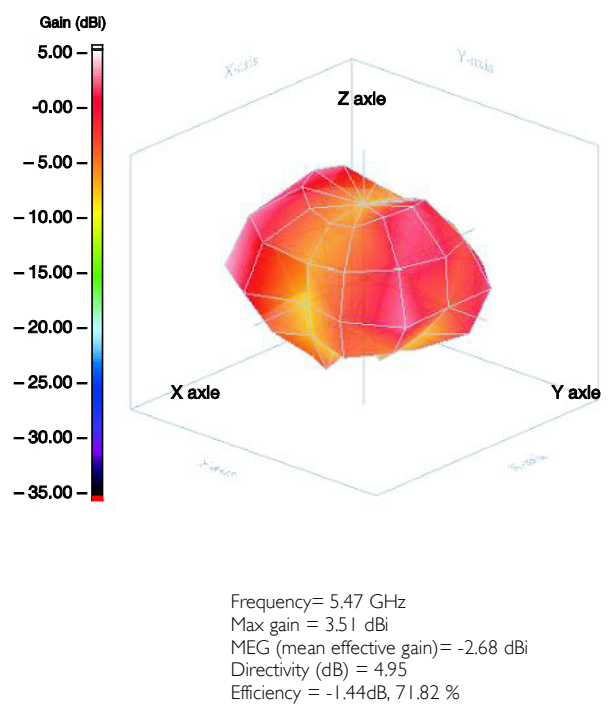
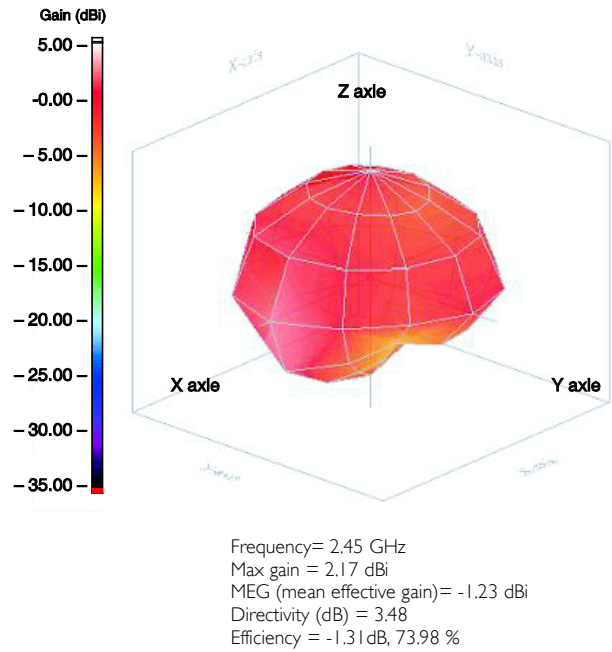
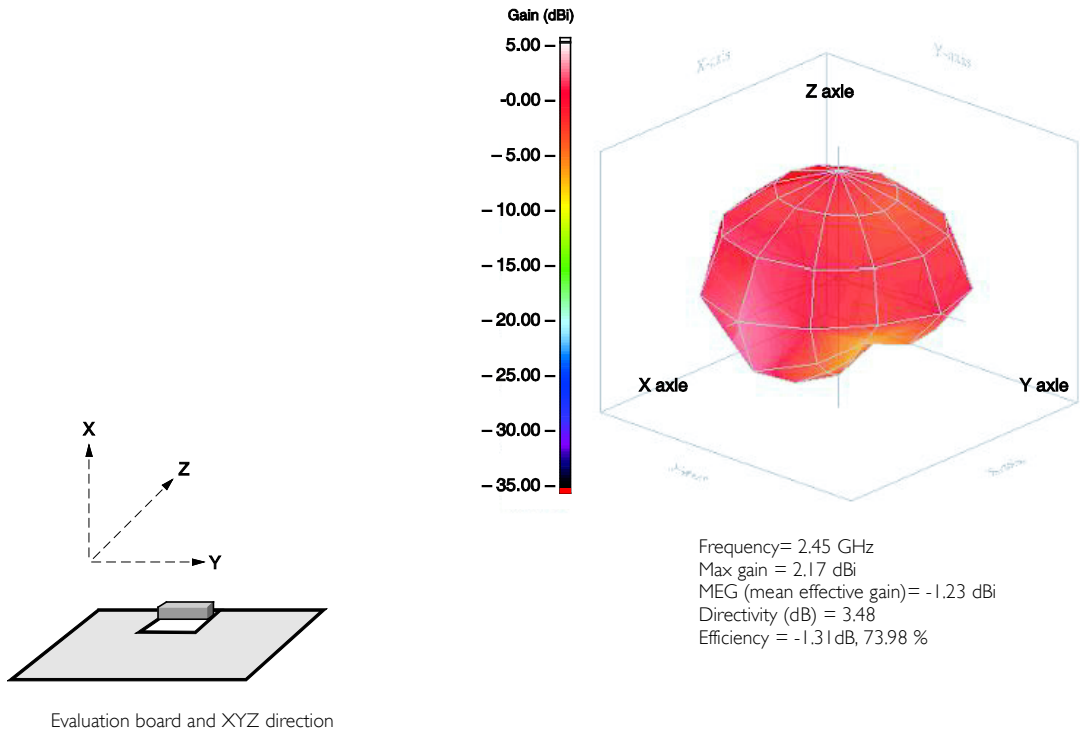


YNH00105

Fig. 4 Details of soldering pad

**ELECTRICAL PERFORMANCES**





YNH00107

Fig. 6 Radiation pattern

REVISION HISTORY

REVISION	DATE	CHANGE NOTIFICATION	DESCRIPTION
Version 0	Jan. 30, 2013	-	- New data sheet for SMD type antenna, 2.4 / 5GHz application, 5320 series PIFA mode